

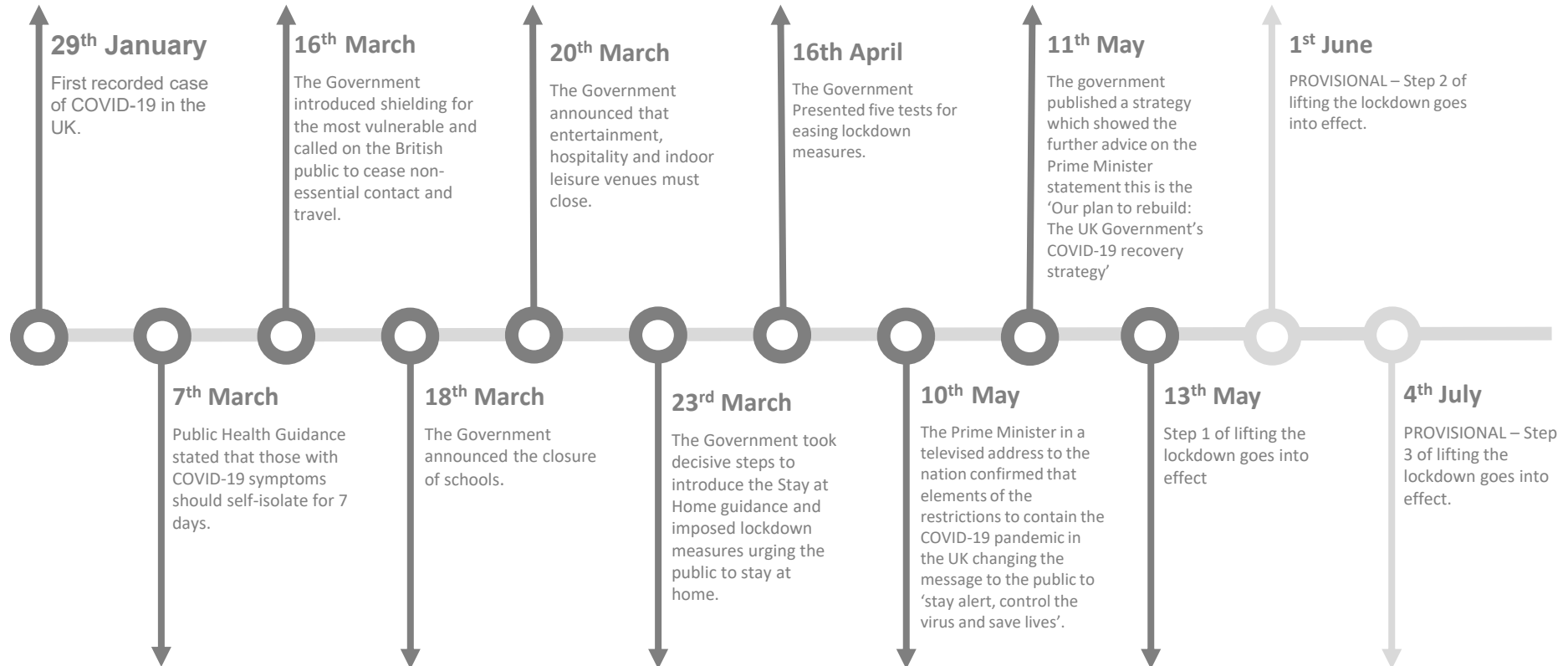
# COVID 19 – Ealing Response and Recovery

June 2020

# Aim

- **Update on the Coronavirus response and Council recovery plans.**

# COVID-19 Incident Timeline



# Ealing Timeline



# Gold Command Structure

**Members updates and Oversight**

- Response

Strategic Leadership Team  
(COVID Gold)

Strategic decision makers

Recovery Gold Activated and monitoring

Covid Preparedness Group meeting by exception

*(Ad Hoc)*

*(Daily)*

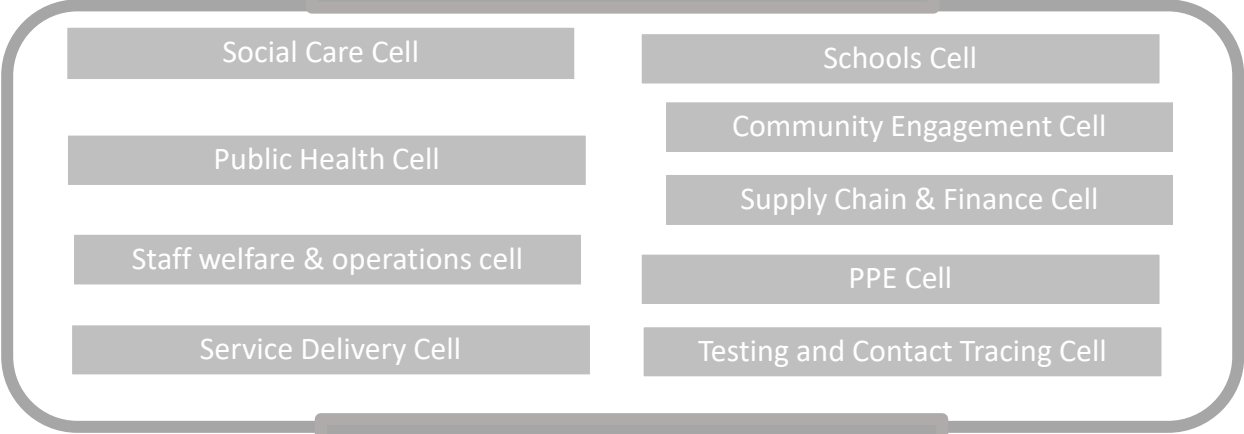
*(Daily)*

Health Protection Forum  
COVID-19 Group  
(Community Planning)

*(Tuesday)*

External Health Partners (Ealing Hospital, North West London NHS, CCG etc)

Borough Emergency Control Centre



Tactical Group



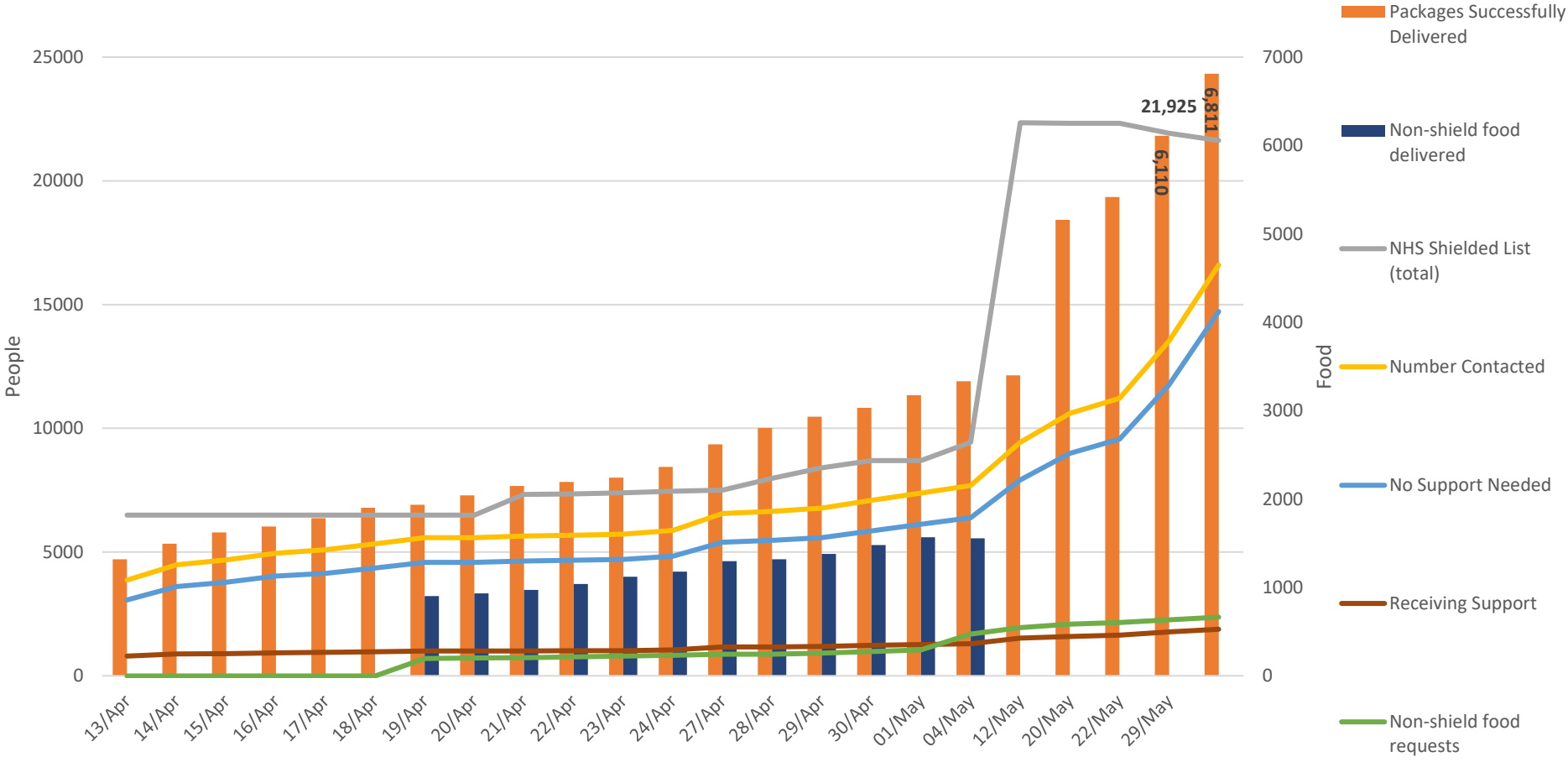
# Covid Strategic Aim and Objectives

Ealing Council will support partners to coordinate an effective response to and recovery from the COVID 19 outbreak

1. Minimise the health impact and support the most vulnerable
2. Minimising impact on staff welfare
3. Ensuring we are delivering key services
4. Supporting the community response
5. Facilitating recovery

# Shielding

**Shielding.** Vulnerable people = line chart (left axis). Food = stack chart (right axis)



## Ealing has:

- Contacted and triaged 21,500 shielded individuals
- Received 2,370 non-shielded helpline requests for food
- Delivered 7,802 food packages to shielded and non-shielded people.

# PPE

We have supported **442** requests for emergency PPE supplies from the local care providers as of **Tuesday 16<sup>th</sup> June 2020**

Full details attached – summary of main items and volumes below:

Aprons (Units)	Fluid Resistant Masks (Units)	Gloves (Units)	Hand Sanitiser (ml)	Eye Protection	Visor Headframes	Visor Headshields
219,859	238,520	578,070	1,943,850	3,581	334	3,065

Greenford Depot is now the distribution hub for West London

West London PPE procurement process has been adopted by London as best practice.



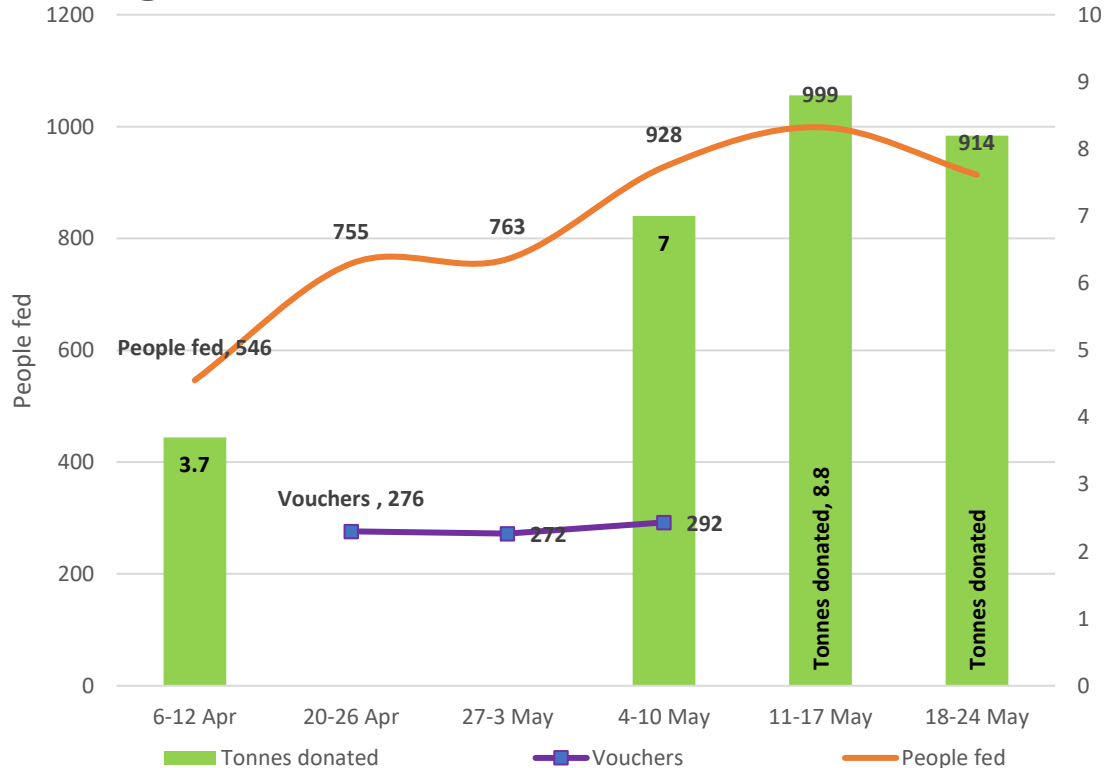
# Community Need

## Community need

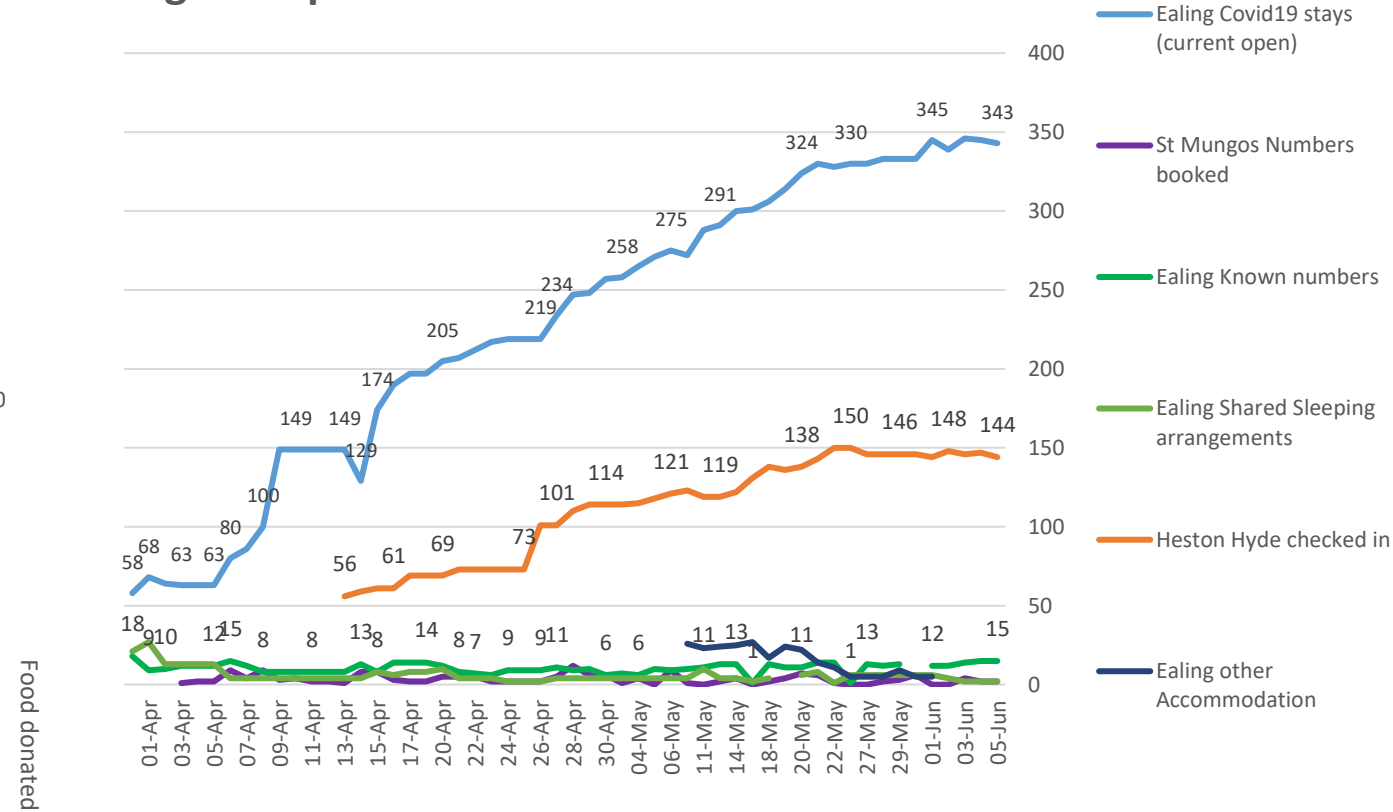
The number of people using the foodbank have increased to nearly **1,000 a week**.

Food donations have reached a high of **8.8 tonnes in a week**,

### Ealing Food Bank



## Rough Sleepers



## Rough sleepers and Covid19 Stays.

Ealing is now housing a new category of people, the 'Covid 19 stays' as well as the borough's homeless.

The number of Covid19 stays have increased from **58** at the beginning of April to a high of **345** on 1 June, a **six times increase** from 1 April.

- **Libraries** have closed their doors to the public, but **e-book** borrowing has continued during lockdown.
- **Keyworkers** continue work in the community, driving to their appointments and **Parking Services** worked hard to enable this by receiving and processing **2,466 parking dispensations**.
- **Housing Repairs** have continued to maintain the buildings and homes of Ealing Council tenants and leaseholders and from 28 March to 7 June **1,366 repairs have been completed** during lockdown, around 600 jobs completed each full month.
- **Relief (Bill Reduction) 2,906 cases**
- **Grant 5282 cases**
- **Continued waste collection.**
- **Recycling centres** have now reopened
- Supporting the **reopening of the high street**

# Revised Structure in Alert Level 1

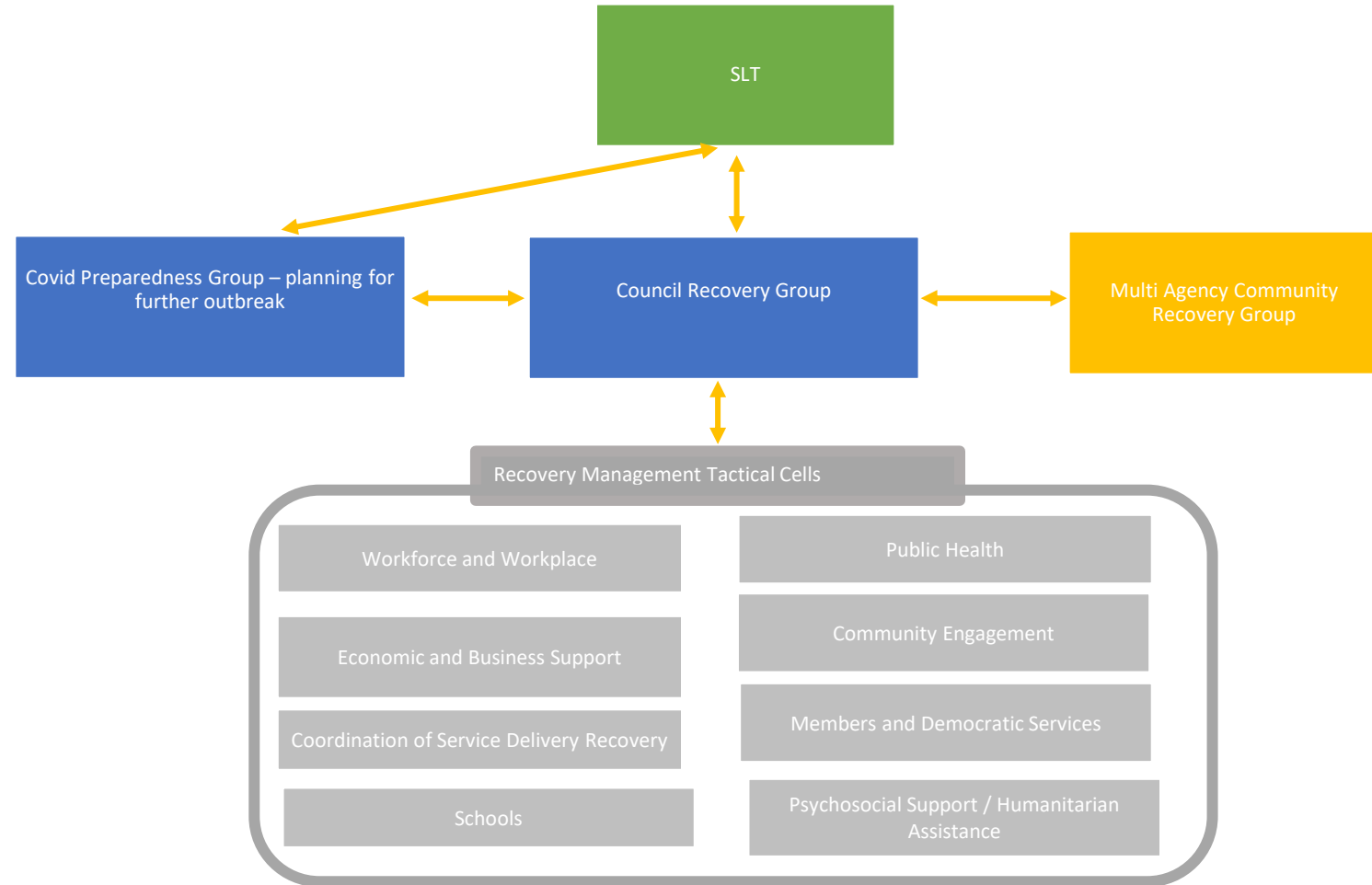
Cross Cutting Workstreams linked to Response, Recovery and Preparedness

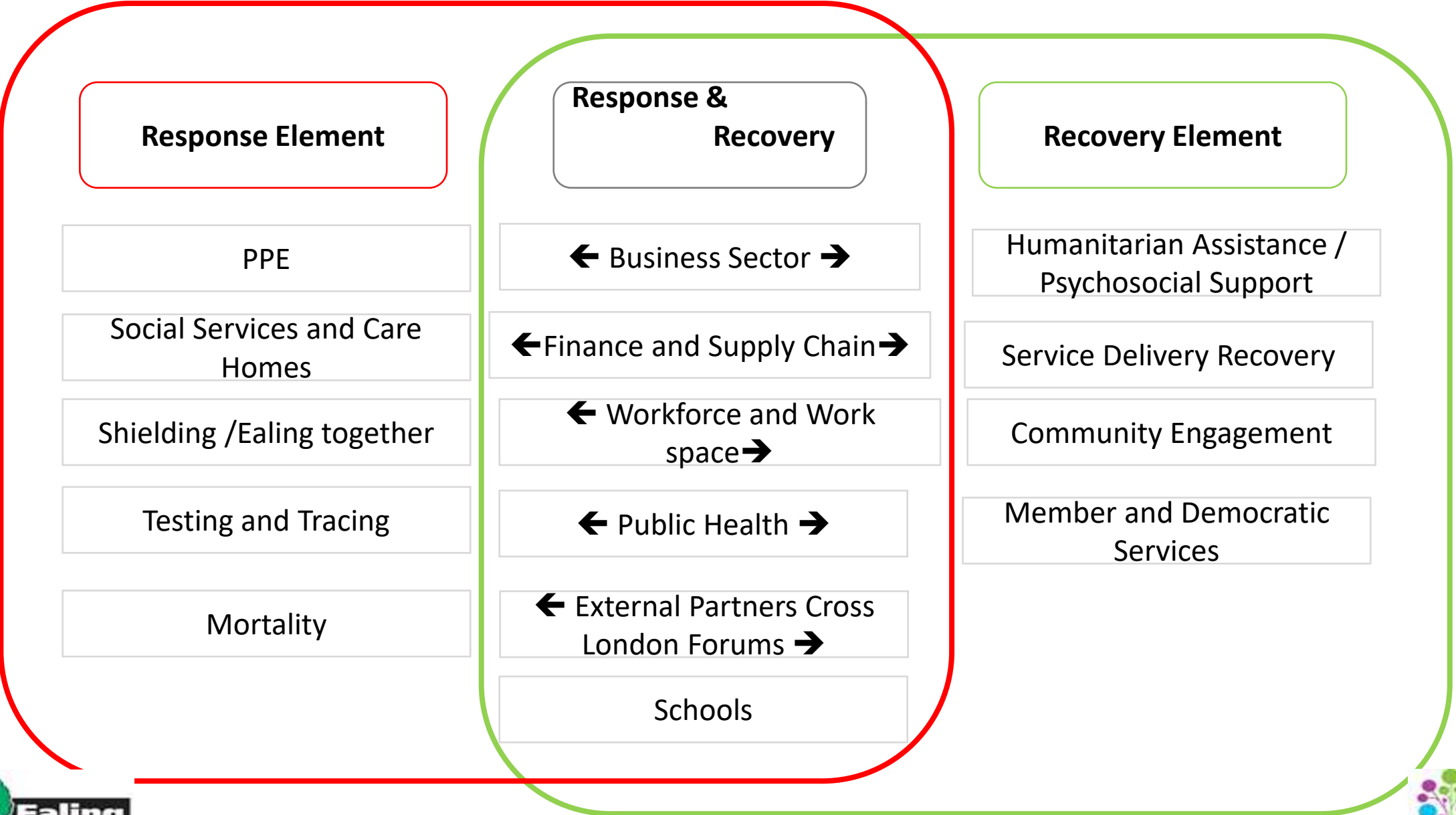
Finance

Future Ealing Programmes

## Members updates and Oversight

- Recovery
- Preparedness





## **Workshops:**

- Heads of Service (14<sup>th</sup> April 2020)
- Directors (17<sup>th</sup> April 2020)

## **2 Impact Assessment Surveys completed**

- Designed to identify how services have been impacted by COVID-19, identify changes to services, innovative ways of working, and the support services may require when restarting service delivery.

## **Recovery Coordination Group**

- Established and meeting weekly

## **West London Recovery Meetings**

- Discussions with regional recovery leads and emergency planning colleagues regarding work being undertaken in each borough to ensure coordination.

## *Considerations*

a) Multiagency opportunities for recovery?

a) Opportunities for closer partnership working in the event of a 2<sup>nd</sup> wave?